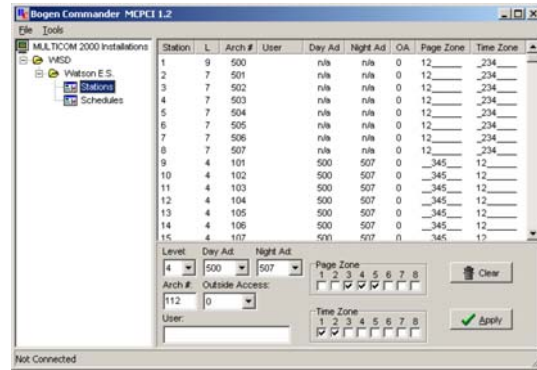


Multicom 2000®

Bogen Commander Model MCPCI



The Bogen Commander provides users with a flexible, easy-to-use software solution for facility database creation and maintenance.

Description

With the Bogen Commander, you can:

- o Design and create Multicom 2000 facility databases, including system, station, and schedule information.
- o Upload or download database information to and from the Multicom 2000 using a local direct or remote dial connection. Databases are created and modified offline, then uploaded to the Multicom system.
- o Test Multicom 2000 components, including analog, station and telephone cards, address validity, and memory. Diagnostics are performed while online with the Multicom 2000 via the local or remote connection.

The Bogen Commander enables you to create and configure the databases necessary to control the behavior of the Multicom 2000. Using a personal computer, you configure one or more customer-specific databases, defining facility, station, and schedule details.

Features

- Provides easy interface and programming via PC for single or multiple facilities
- Sets building schedules and priorities
- Includes Windows-based diagnostic / programming software for system testing and for full remote maintenance via RS-232, modem or TCP/IP network
- Provides remote system programming
- System shall be user-friendly utilizing Windows type protocol and methods to create, edit, and manage files

Architect and Engineer Specifications

Commander Software (Model MCPCI)

The Commander software shall be a program facilitator for building, system, station, and schedule information. The system shall include Windows®-based diagnostic / programming software for system testing and for full remote maintenance via RS-232, modem, or TCP/IP network for on-site or off-site diagnostics by a distributor or other factory authorized personnel.

It shall be possible to determine circuit and software

faults via these diagnostics and facilities and to make remote software changes to the system. The system shall also maintain statistics of operations of the main system functions for use by the individual administering the system. System shall be user-friendly utilizing Windows type protocol and methods to create, edit, and manage files.

| | |
|------------------------------------|---|
| Minimum System Requirements | Pentium II processor 16 MB RAM Hard drive with a minimum of 100 MB free space RS-232 port Windows 95/98/2000/NT or XP |
|------------------------------------|---|

Windows is a registered trademark of Microsoft Corporation.

Specifications subject to change without notice.
© 2004 Bogen Communications, Inc.
Part No. 54-8023-10A 0409

ENGINEERED SYSTEMS
BOGEN®

50 Spring Street, Ramsey, NJ 07446, U.S.A.
201-934-8500 FAX: 201-934-9832
Web Site: www.bogen.com